



1:200000

Carte hydrogéologique de la République du Tchad Ouvrages et Ressources

Kapka

ND-34-22 ND-34-22

Kapka

Carte hydrogéologique de la République du Tchad Ouvrages et Ressources

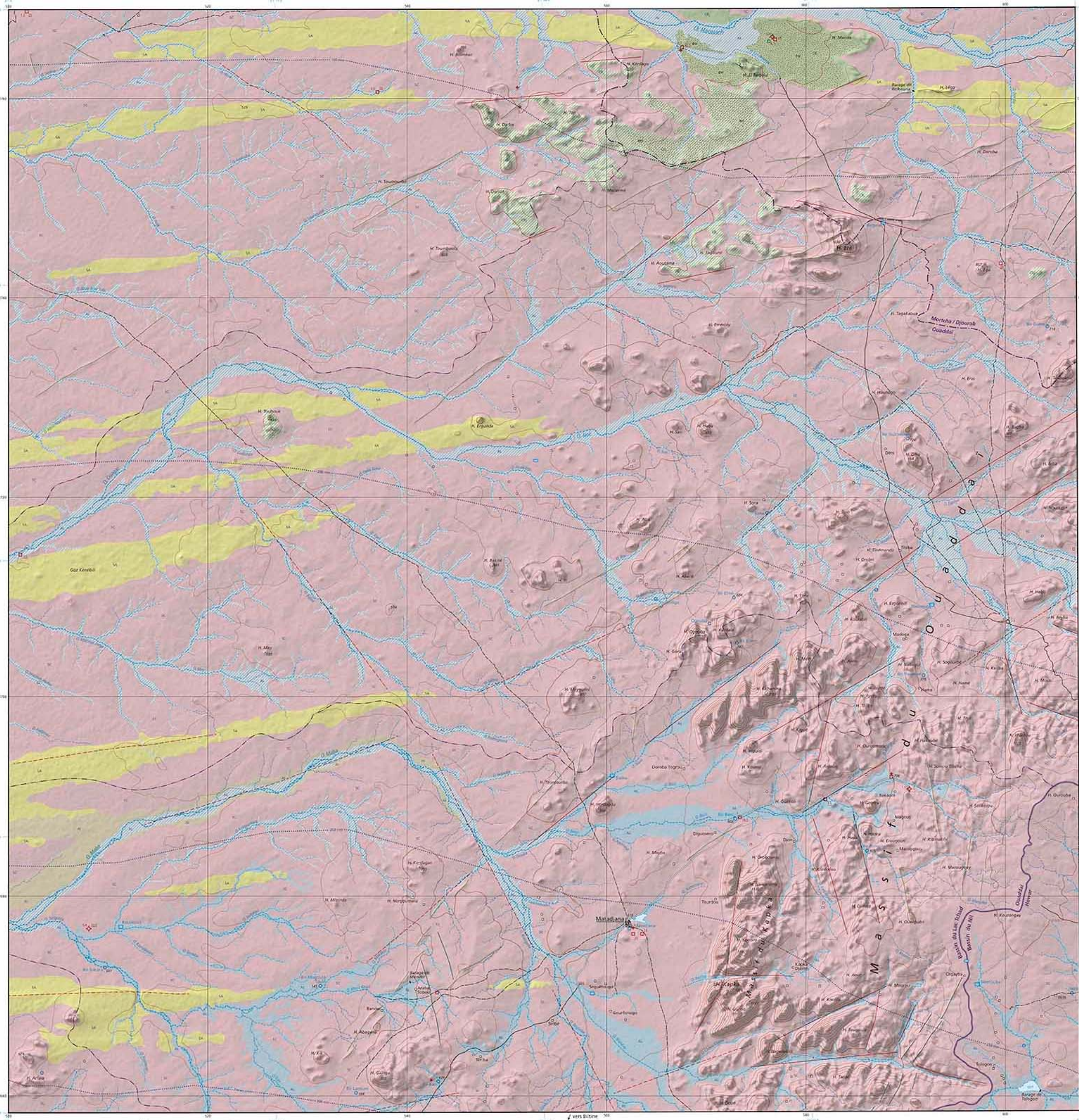
1:200000



2014

Tableau des feuilles à 1:200000

Grid table showing sheet coordinates and numbers for the 1:200000 scale.



Legend for the map, detailing hydrogeological formations, structures, and symbols for wells and infrastructure.

Table listing population sizes for various locations: Abeché, Guéréda, Dumbou, Mada, Iriba, and Biltine.

Section titled 'OUVRAGES ET RESSOURCES' providing an overview of water resources and infrastructure in the region.

Section titled 'Les nappes des ouadis' describing the characteristics and distribution of oases in the area.

Section titled 'Alluvions et grès du Ouadi Housah' detailing the geological and hydrogeological features of the Housah valley.

Section titled 'Seuils, micro-barrages et valorisation des ouadis' discussing the use of weirs and small dams for water management.

Section titled 'Ouvrages de référence' listing key references and studies related to the hydrogeology of the region.

Section titled 'Citation' providing the official citation for the map and its production details.

Technical specifications including magnetic declination and coordinate system information.

Projection: Métrique Transverse Universelle (MTU / UTM) and datum information.

Datum géodésique: WGS84 and scale information for the 1:200000 map.

Reserves: A statement regarding the use of administrative and geographical data.

Produit réalisé par UNOSAT et wstovtop, Genève et Wabern, CH, 2014.